

## How to get to our clinic

Our Clinic is conveniently located at 2F/34 High Street, Southport. There are 2 hours free customer parking available onsite.



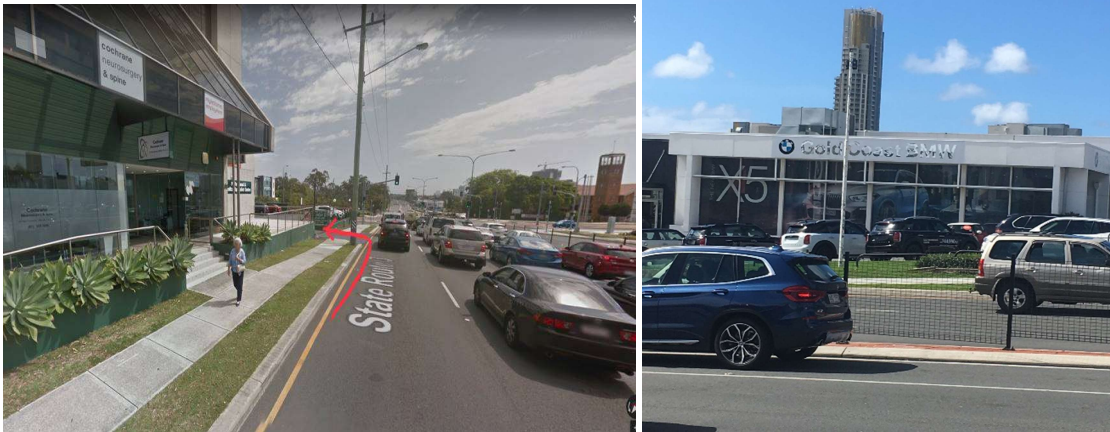
### A) Self Drive :

If you are driving from the South end on High Street, as soon as you are at the light of the intersection of High Street & Queen Street intersection (picture below). You will see the Southport Health Precinct building on your left and Premion building on your right.

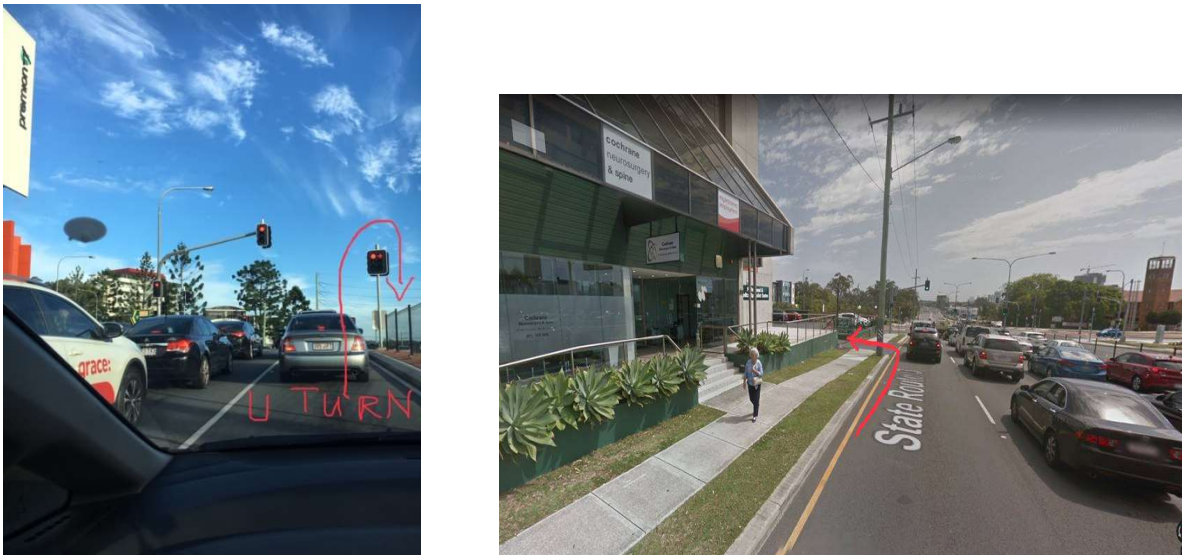


## How to get to our clinic

After you drive pass the traffic light, the clinic car park entrance will be on your left hand side and you will see Gold Coast BMW car dealer on your right hand side.



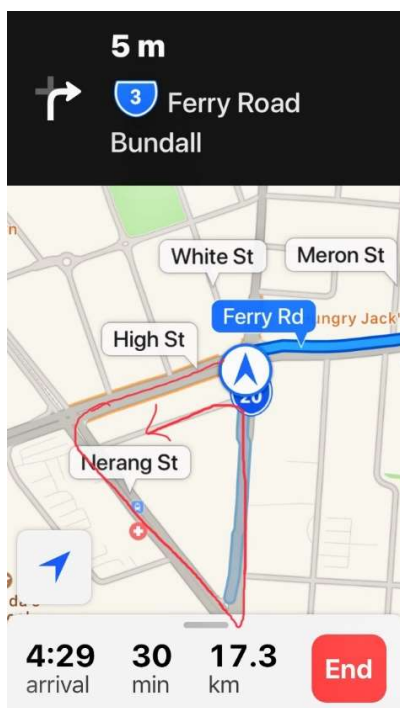
If you are coming from the North end on High Street, you will need to make a U turn at the traffic light after you drive pass BMW car dealer and see Premion building on your left. Then just follow the above instruction and you will reach our building's car park entrance.



## How to get to our clinic

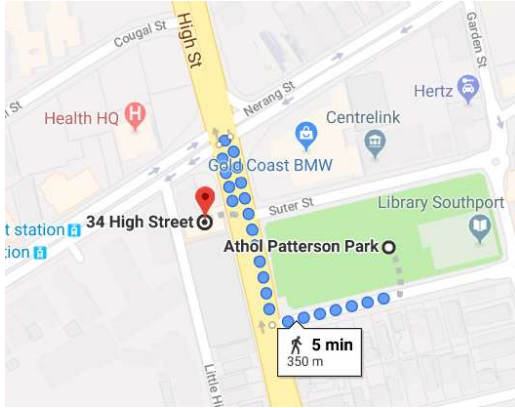
In the case of the onsite car parking is full, there are plenty of off-street parking nearby.

1. Little High Street 2 Hour off street parking. To reach this side street parking, you will have to turn left from the onsite car park when you drive out to High Street, then turn left again at the traffic light and you will see the ONE WAY sign indicated in the right photo below and then turn in to the Little High Street and you will see the 2P free parking sign



## How to get to our clinic

2. Athol Patterson Park Car Park (from \$2/hour to \$6 per day)



### Athol Paterson Carpark

Location: Sulter Street, Southport

Parking fees:

Duration	Price	Time
Hourly	\$2.00	Monday – Saturday 9am-5pm
Daily	\$6.00	Monday – Friday 9am-5pm
Weekly Pass	\$27.30	Monday – Saturday 9am-5pm
Monthly Pass	\$100.00	Monday – Saturday 9am-5pm
Annually Pass	N.A	N.A

## How to get to our clinic

### B) By Public Transportation:

If you are taking public Transportation, there are both a bus stop and a light rail stop behind our clinic on Nerang Street. You just have to plan your public transportation journey from your own location and reach to the nearest train station/bus station so to connect with light rail or bus to reach Nerang St Station. <https://jp.translink.com.au/plan-your-journey/journey-planner>

